

## Moorpark

**Waterbody:** Gabbert Canyon Drain (tributary to Arroyo Las Posas)

**Location:** North side of SR 118 near southwest corner of So. Cal. Edison property (34°16'44.29"N, 118°54'19.40"W)

**Pros:** Likely well-defined rating table

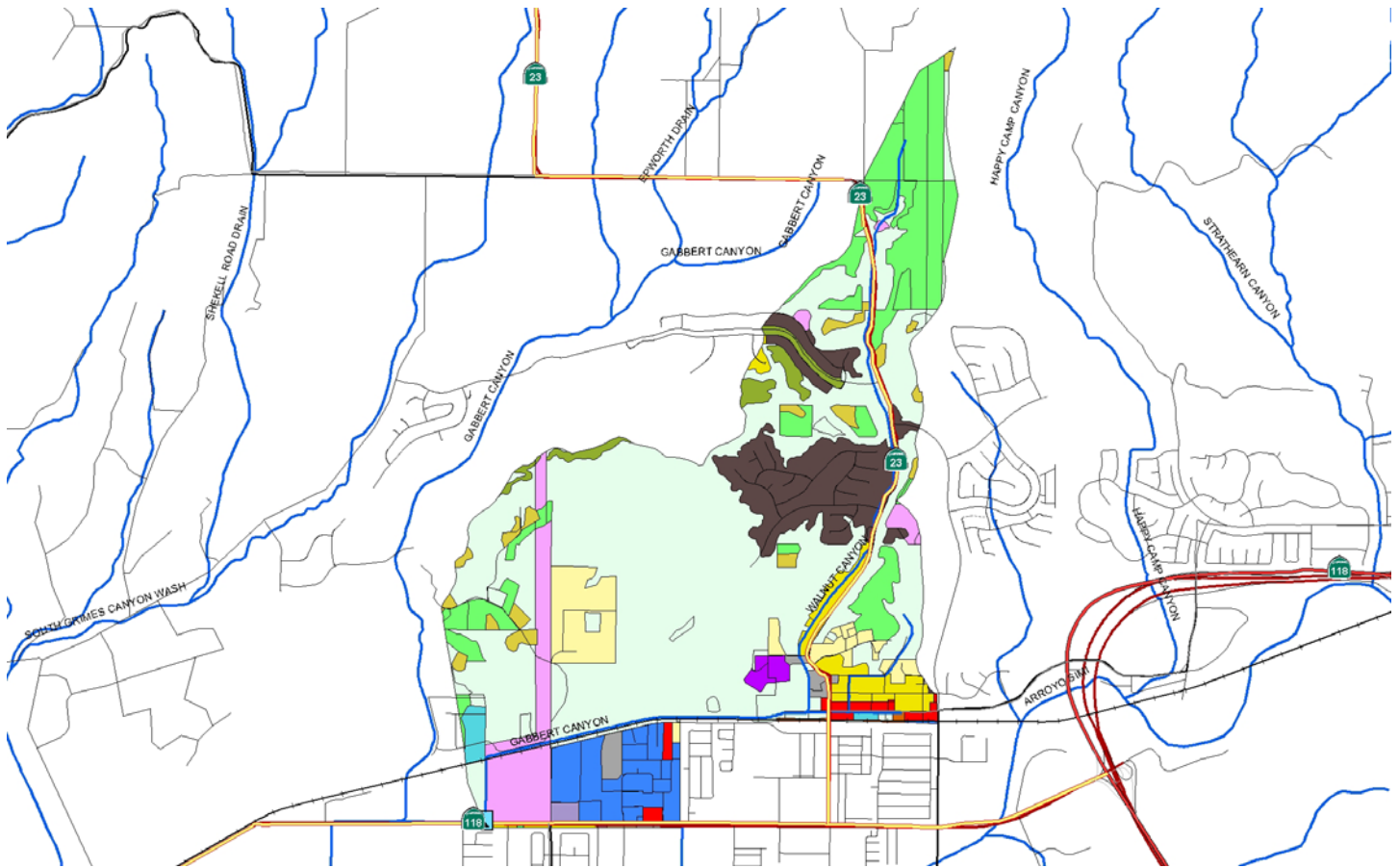
**Cons:** Aerial deposition from vehicular traffic on 118, potential for vandalism

**Outstanding Site Selection Tasks:** Move sampling location shown on watershed map

**Other Potential Sites:** Upstream current location, although site would interfere with access road

**Dry Season Flow Potential:** Likely intermittent year-round flow due to urban runoff





### Entire City

Land Use	Acres	% of Total Watershed
<b>Land Use</b>	<b>Acres</b>	<b>% of Total Watershed</b>
Agriculture	351.7	4.0%
Com_Indus. Mix	9.1	0.0%
Commercial	196.3	2.0%
Extraction	39.2	0.0%
Facility	40.9	1.0%
Industrial_1	21.3	0.0%
Industrial_3	225.2	3.0%
No Info Given	148.3	2.0%
Recreation	186.1	2.0%
Res.1	213.5	3.0%
Res.2	190.4	2.0%
Res.3	1854.6	23.0%
Res.4	106.8	1.0%
Schools	302.1	4.0%
Transportation	198.0	2.0%
Under Construction	472.9	6.0%
Utilities	211.9	3.0%
Vacant Undifferentiated	3213.1	40.0%
<b>Totals</b>	<b>7981.5</b>	<b>100.0%</b>

### Selected Subwatershed

Land Use	Acres	% of Total Watershed
Agriculture	230.0	12.7%
Commercial	19.9	1.1%
Extraction	5.8	0.3%
Facility	16.8	0.9%
Industrial_1	13.3	0.7%
Industrial_3	90.4	5.0%
Recreation	31.0	1.7%
Res.1	82.3	4.5%
Res.2	37.4	2.1%
Res.3	56.3	3.1%
Res.4	1.5	0.1%
Schools	10.5	0.6%
Transportation	3.1	0.2%
Under Construction	166.2	9.2%
Utilities	100.7	5.5%
Vacant Undifferentiated	950.8	52.4%
<b>Totals</b>	<b>1816.2</b>	<b>100.0%</b>